



# Town Hall Meeting

Colorado Chautauqua Association

April 24, 2024

A photograph of a garden scene. In the foreground, several tulips are in bloom, including a yellow one on the left, a red one in the center, and a yellow one on the right. The tulips are surrounded by green foliage. In the background, a paved path leads through a garden with various plants and trees. The text "Firewise Garden" is overlaid in the center of the image.

# Firewise Garden

# Firewise Garden



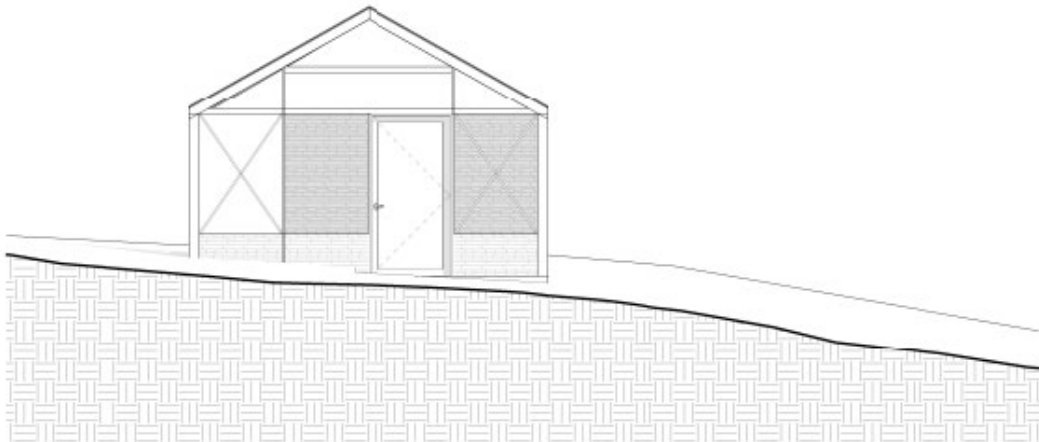
## **Purpose**

- Experiment with a variety of native and Firewise plants
- Determine which plants are best suited to CCA's microclimate
- Share findings in ongoing conversations/classes with community
- Transition successful plants to the larger CCA landscape (ongoing)
- Ensure public access/volunteer opportunities to care for garden space

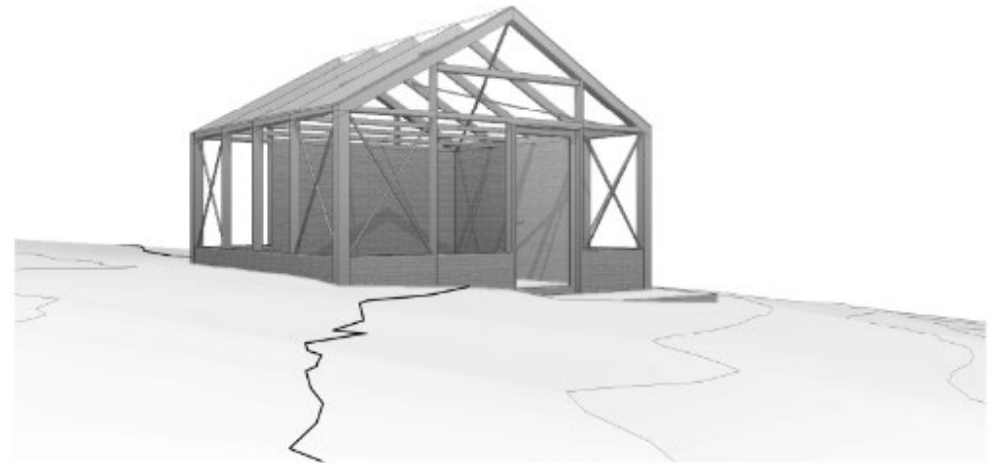
# Firewise Garden

## Greenhouse

- Approximately 275 sq ft (17' x 17')
- About ½ the size of the average 1 bedroom cottage



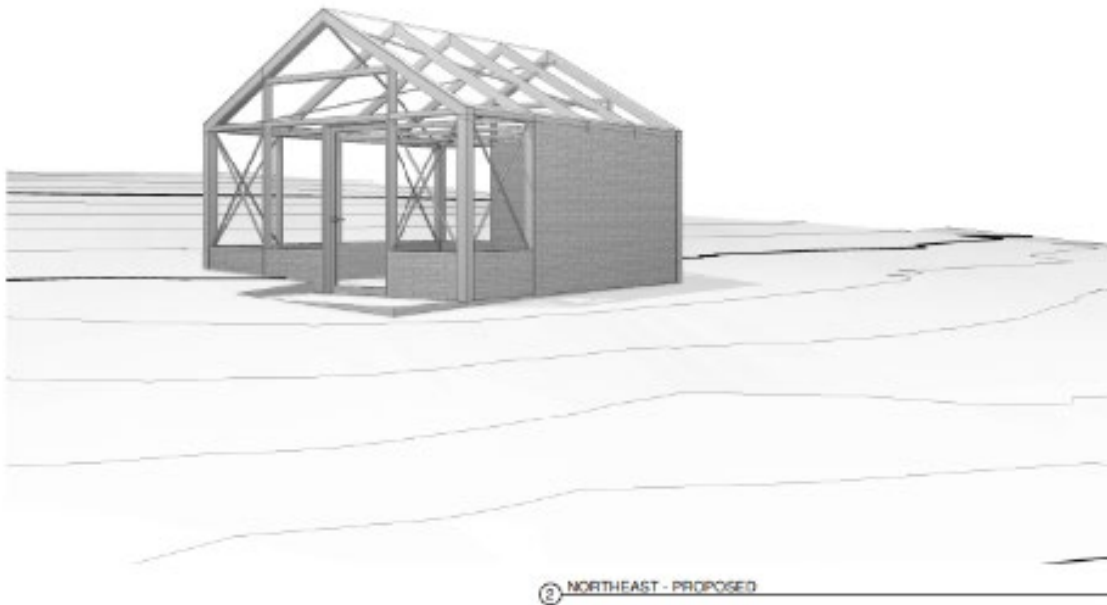
② EAST ELEVATION - PROPOSED  
1/4" = 1'-0"



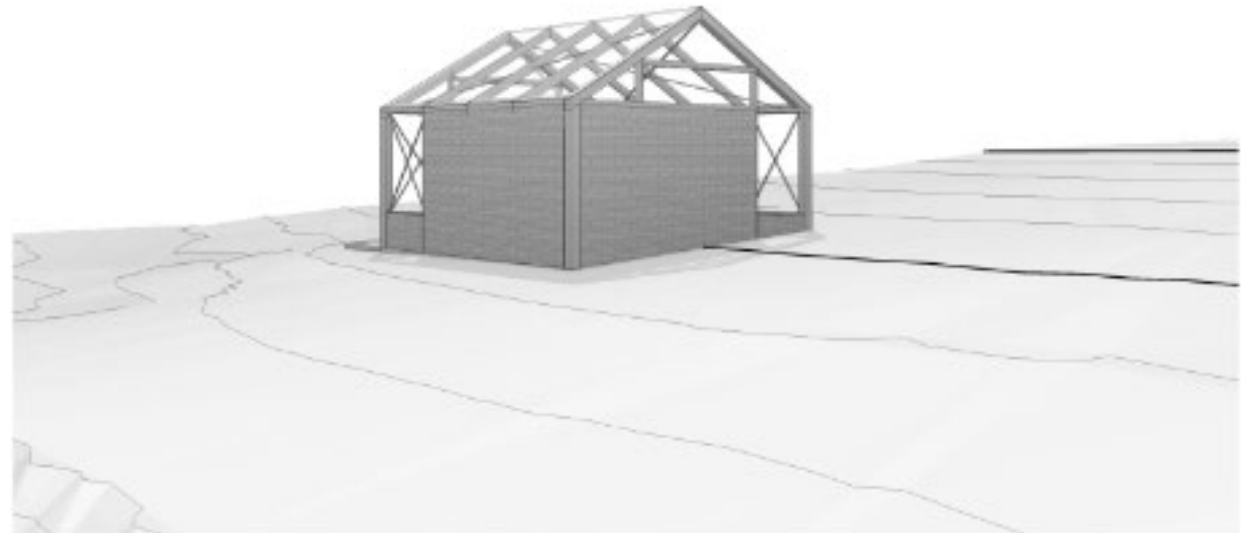
④ SOUTHEAST - PROPOSED

# Firewise Garden

## Greenhouse



② NORTHEAST - PROPOSED



① NORTHWEST - PROPOSED

# Firewise Garden

## **Proposed Elements of Greenhouse**

- Mostly glass construction, except for rubble stone veneer surface on knee wall and north and west walls
- Louvered glass/vent on the west side
- Fire treated wood
- No artificial lighting

# Firewise Garden

## **Review Process**

- Building & Grounds Committee – December 2023, February 2024
- Community Input – April/May - 2024
- Landmarks Alteration Certificate – May 2024
- Project Approval – June/July 2024
- Construction – Fourth Quarter 2024/First Quarter 2025

# Firewise Garden

## **ADDITIONAL INPUT?**

Please email us at [info@chautauqua.com](mailto:info@chautauqua.com)